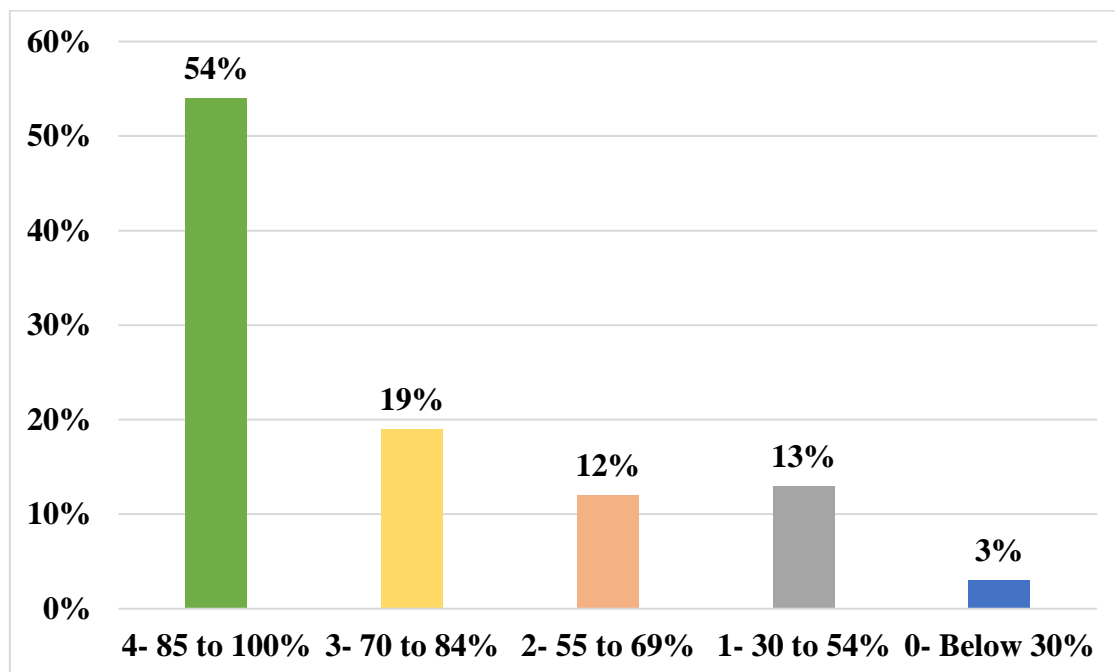


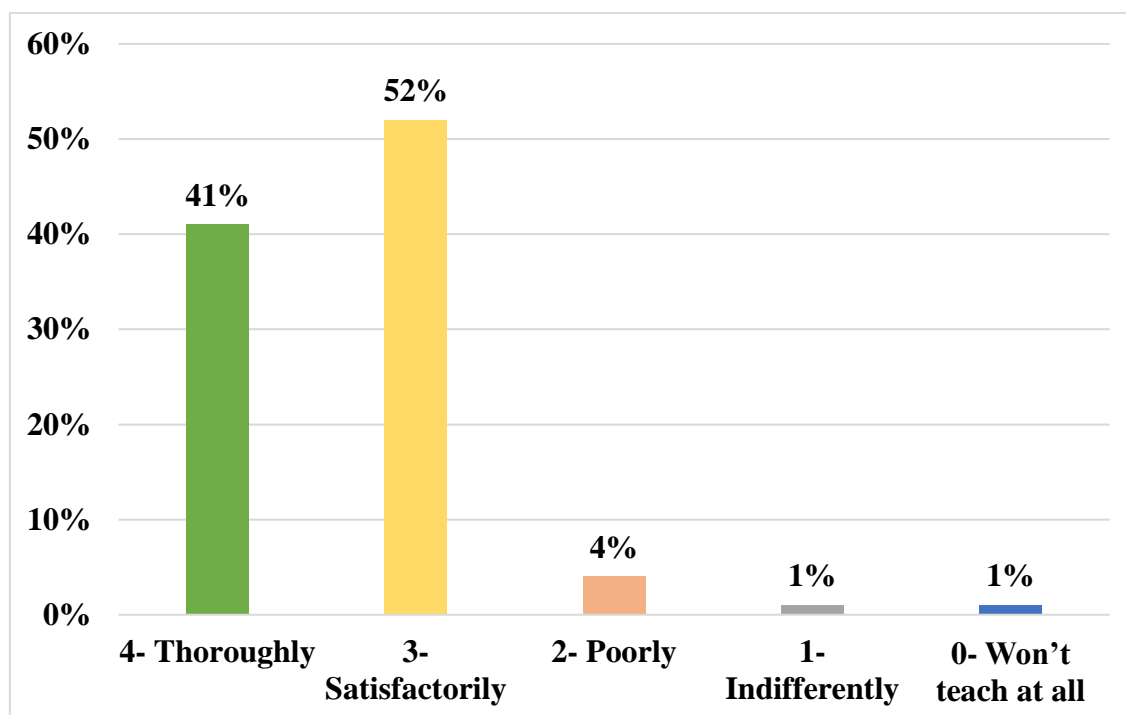


Student Satisfactory Survey of University (2022-2023)

Point-1: How much of the syllabus was covered in the class?

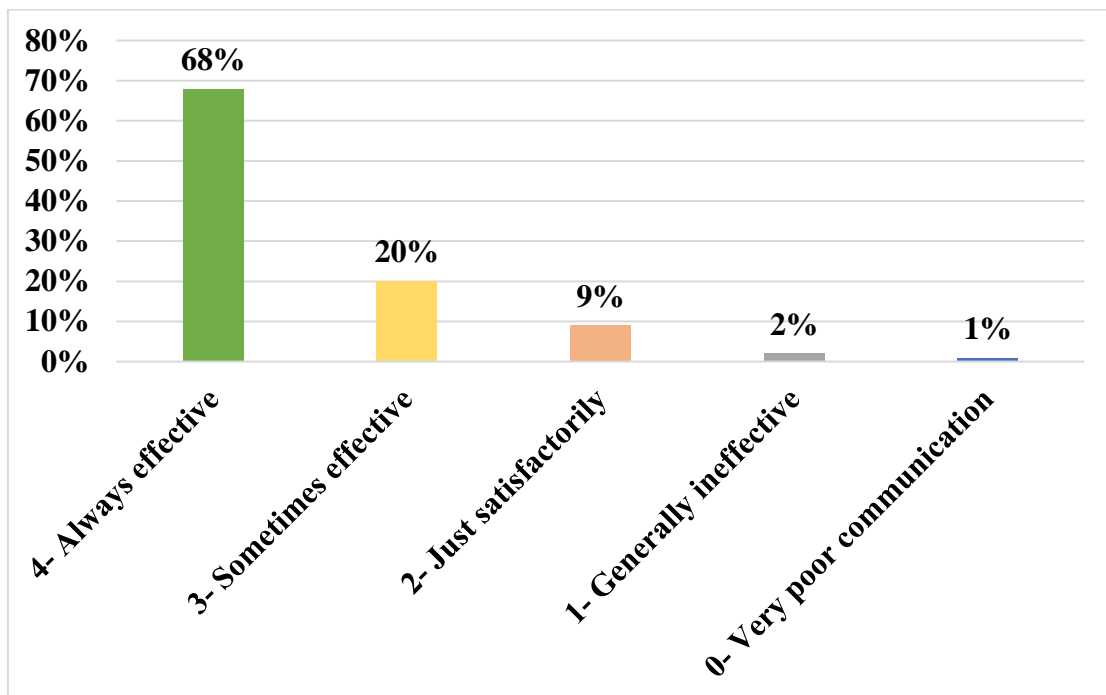


Point 2: How well did the teachers prepare for the classes?

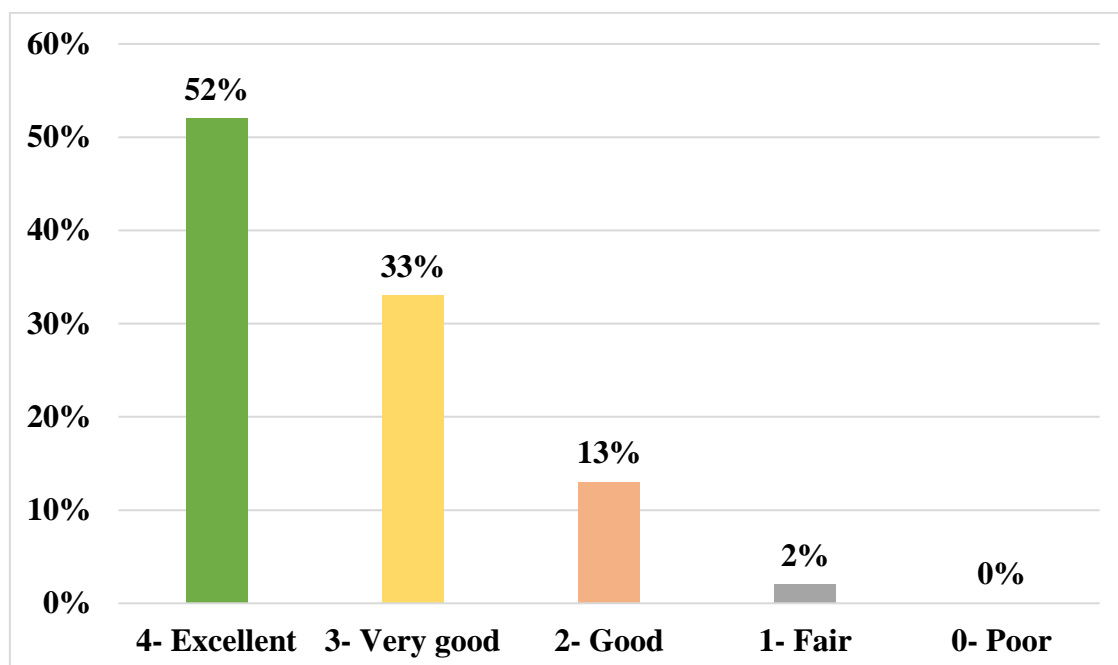




Point 3: How well were the teachers able to communicate?

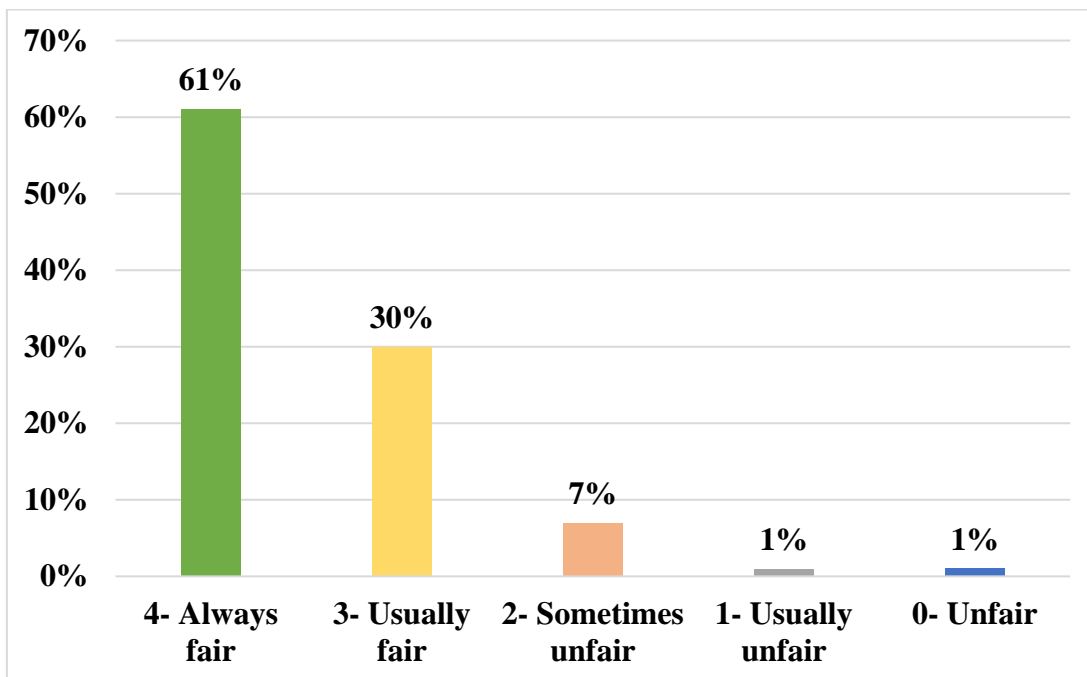


Point 4: The teacher's approach to teaching can best be described as.

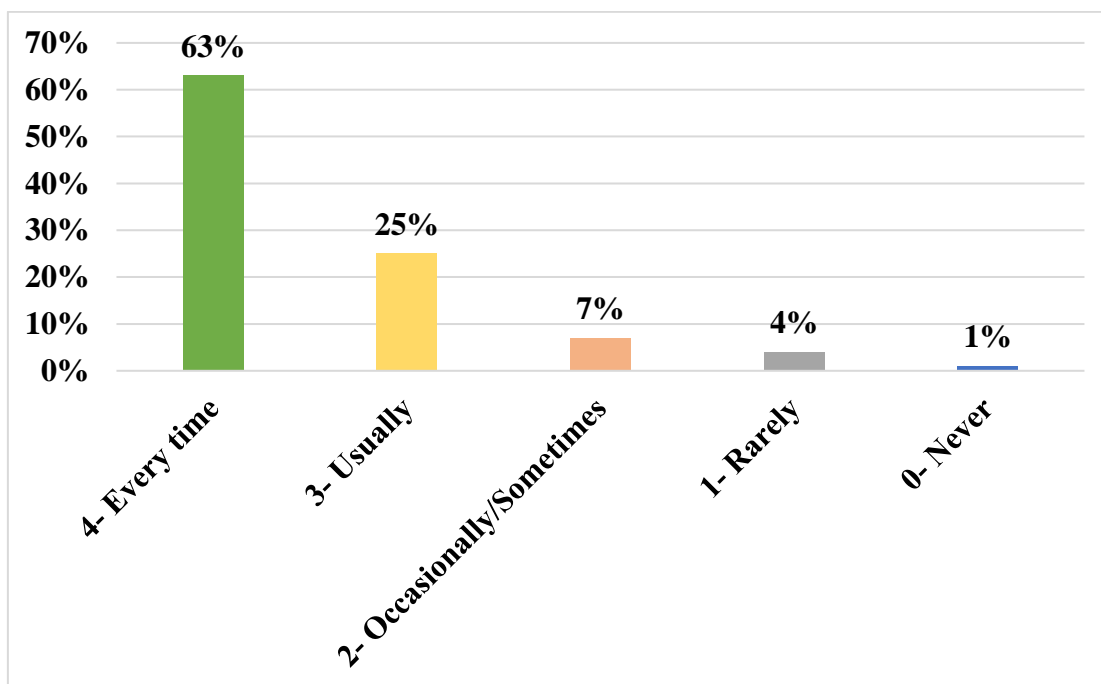




Point 5: Fairness of the internal evaluation process by the teachers.

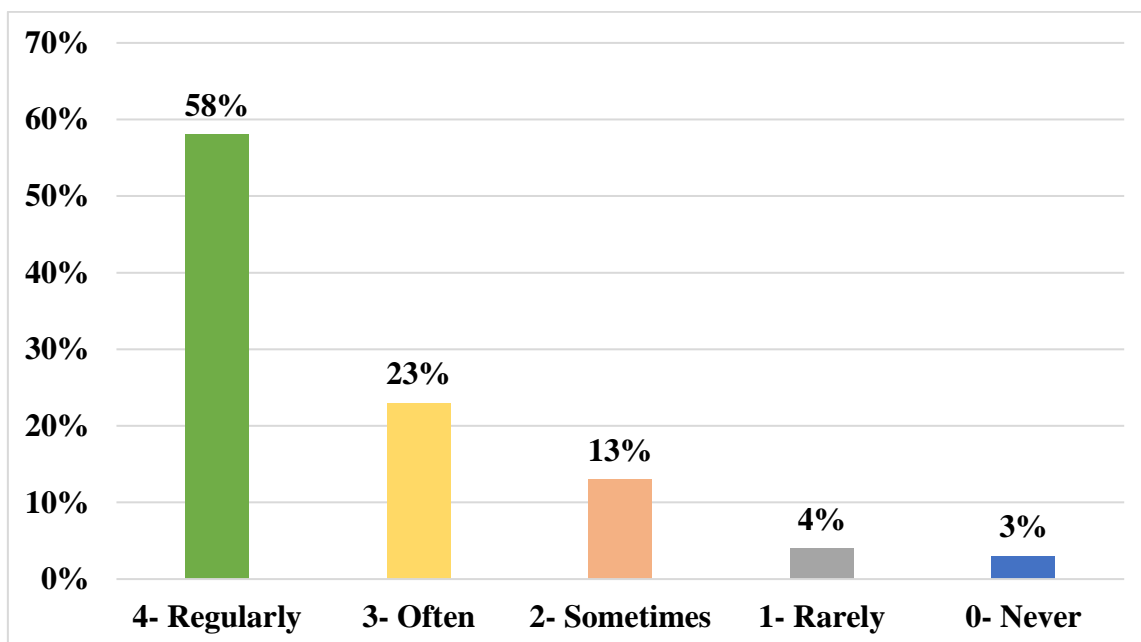


Point 6: Was your performance in assignments discussed with you?

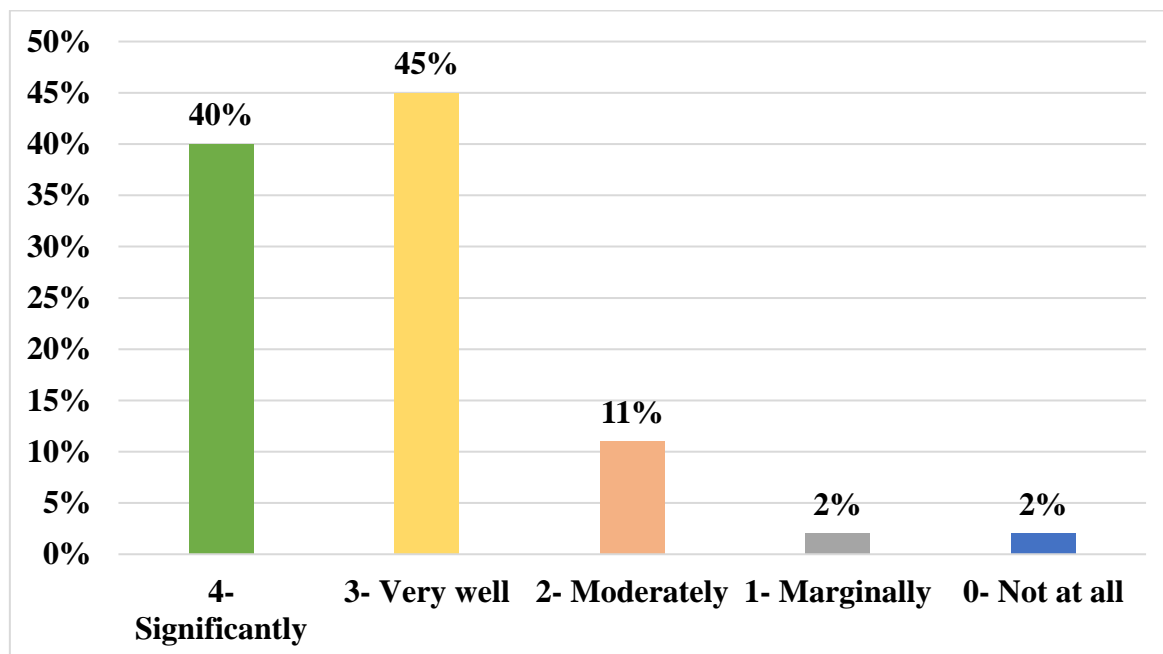




Point 7: The institute takes active interest in promoting internship, student exchange, field visit opportunities for students.

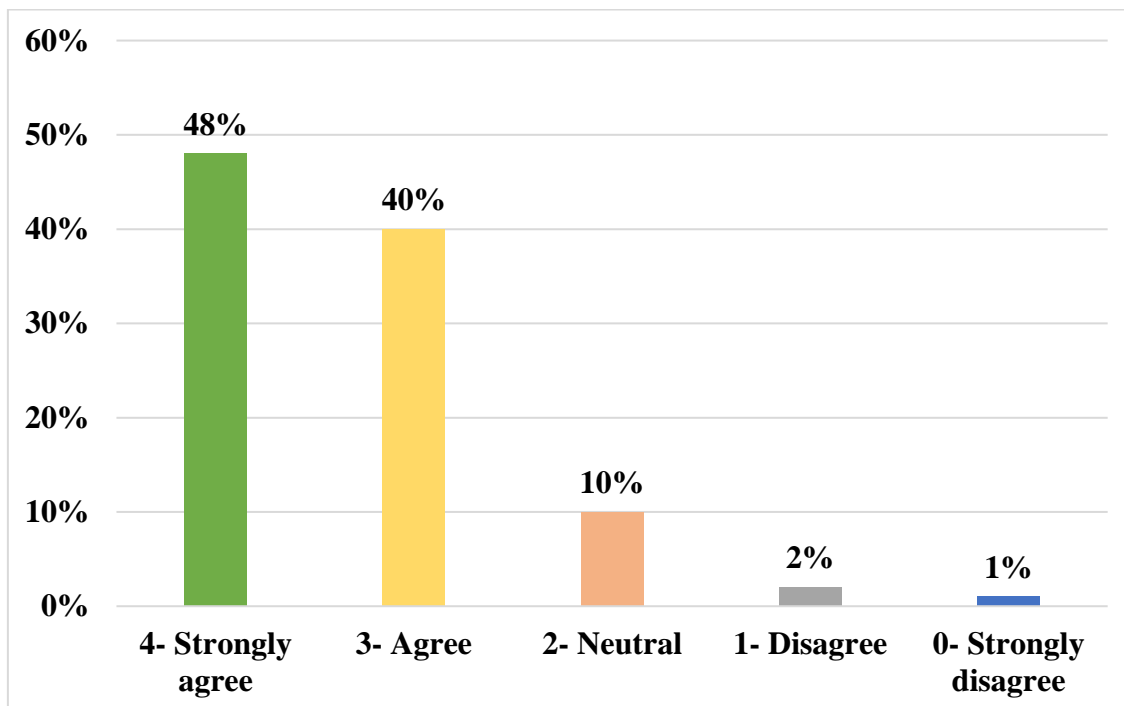


Point 8: The teaching and mentoring process in your institution facilitates you in cognitive, social and emotional growth.

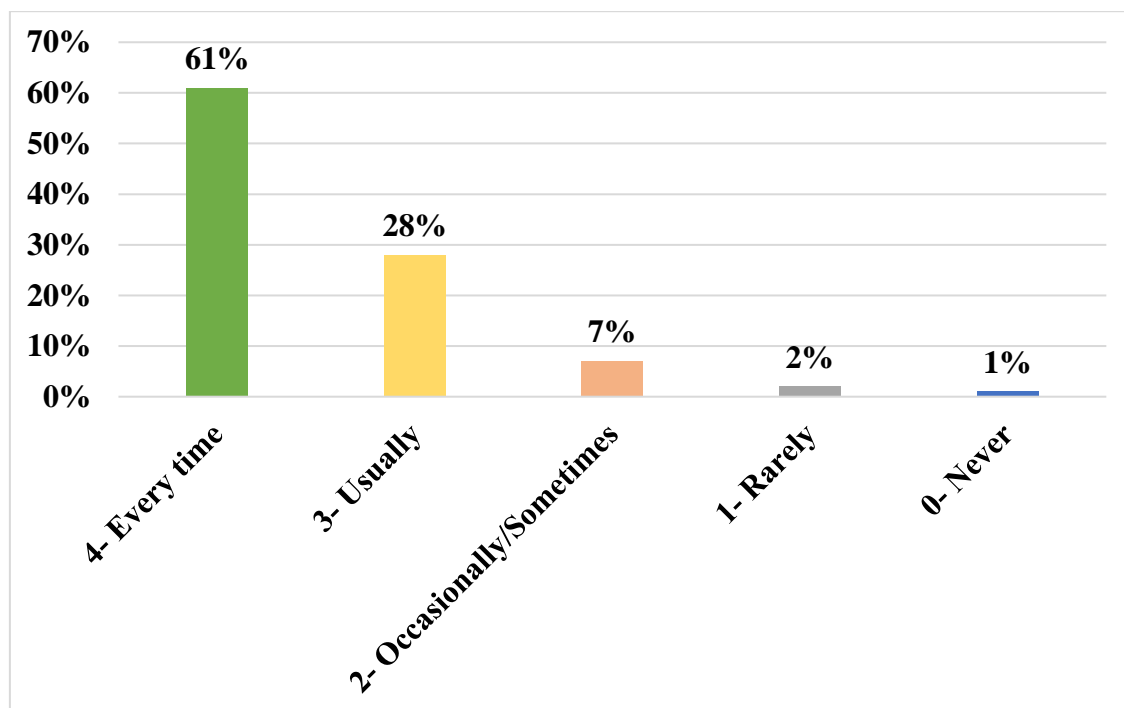




Point 9: The institution provides multiple opportunities to learn and grow.

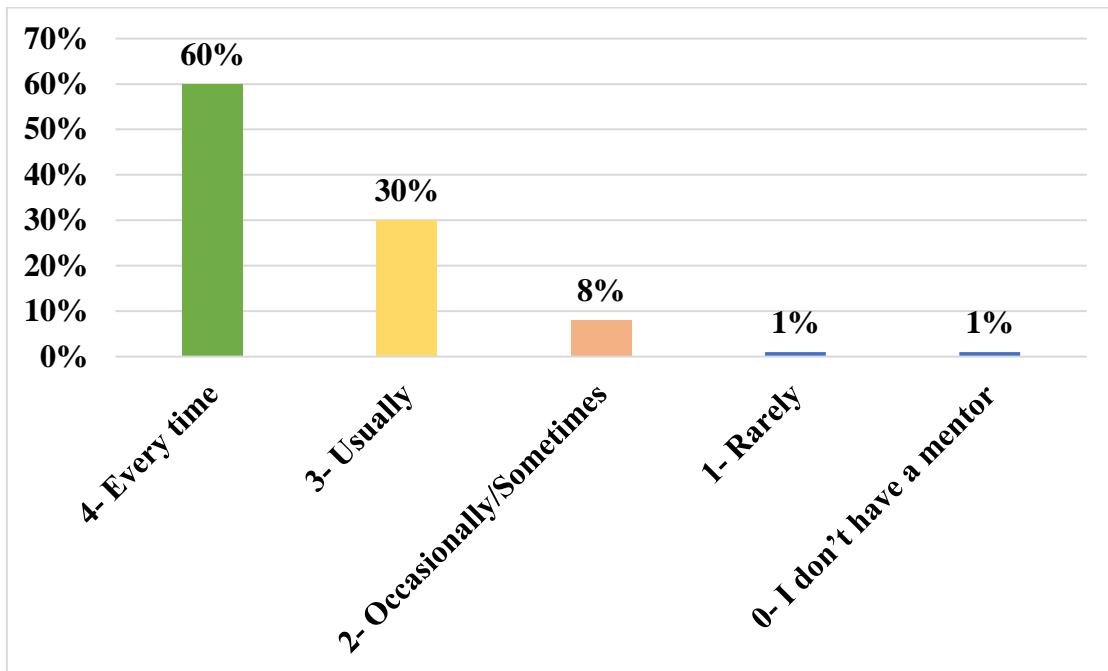


Point 10: Teachers inform you about your expected competencies, course outcomes and programme outcomes.

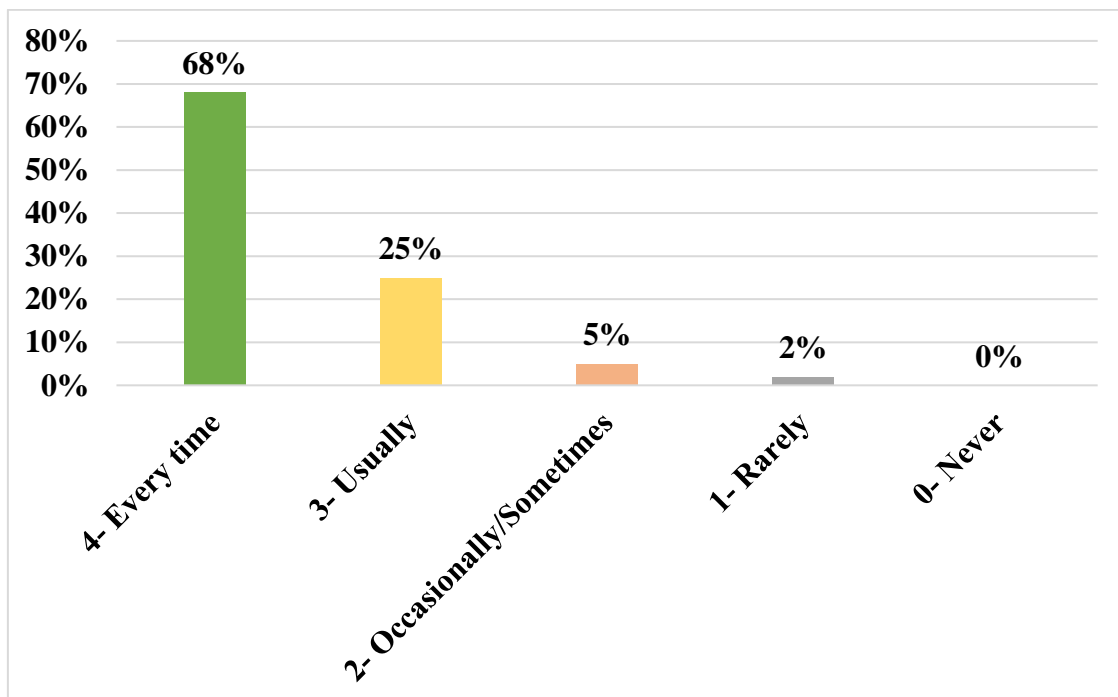




Point 11: Your mentor does a necessary follow-up with an assigned task to you.

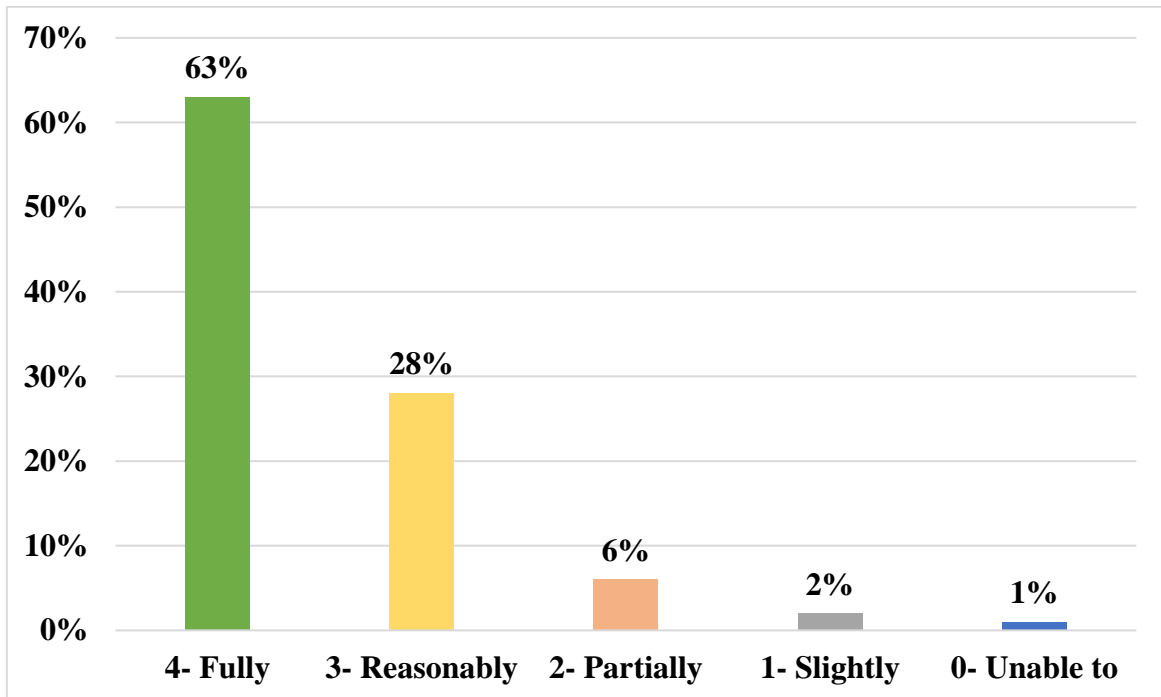


Point 12: The teachers illustrate the concepts through examples and applications.

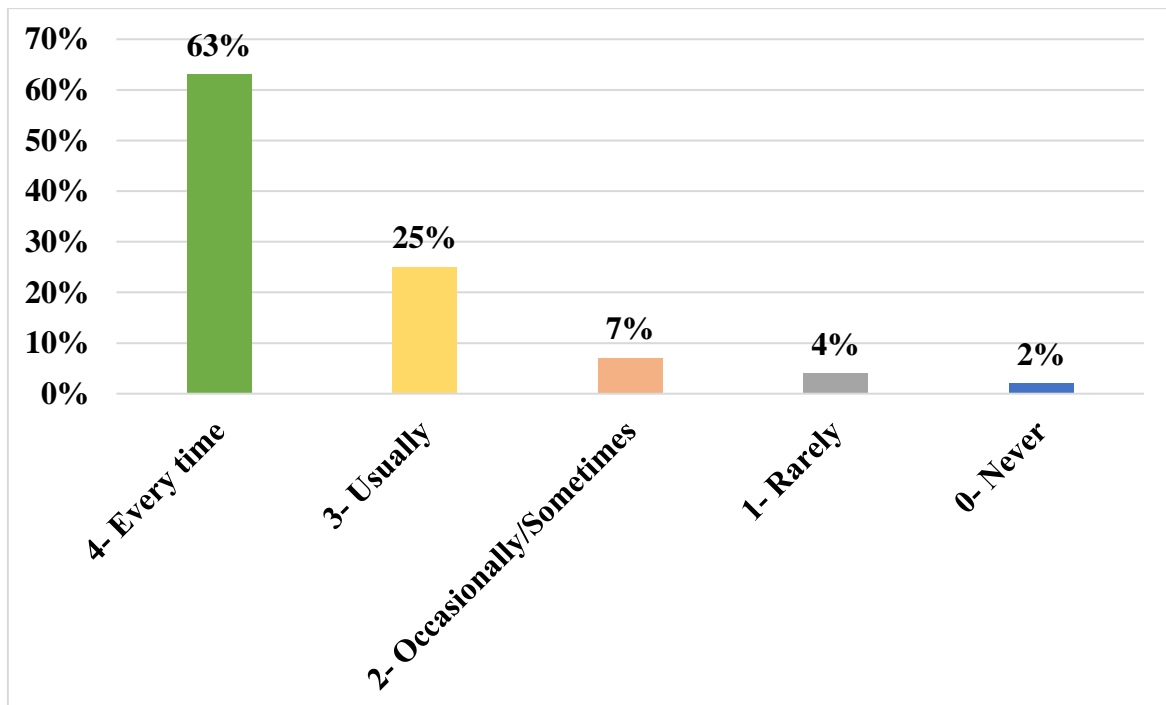




Point 13: The teachers identify your strengths and encourage you with providing right level of challenges.

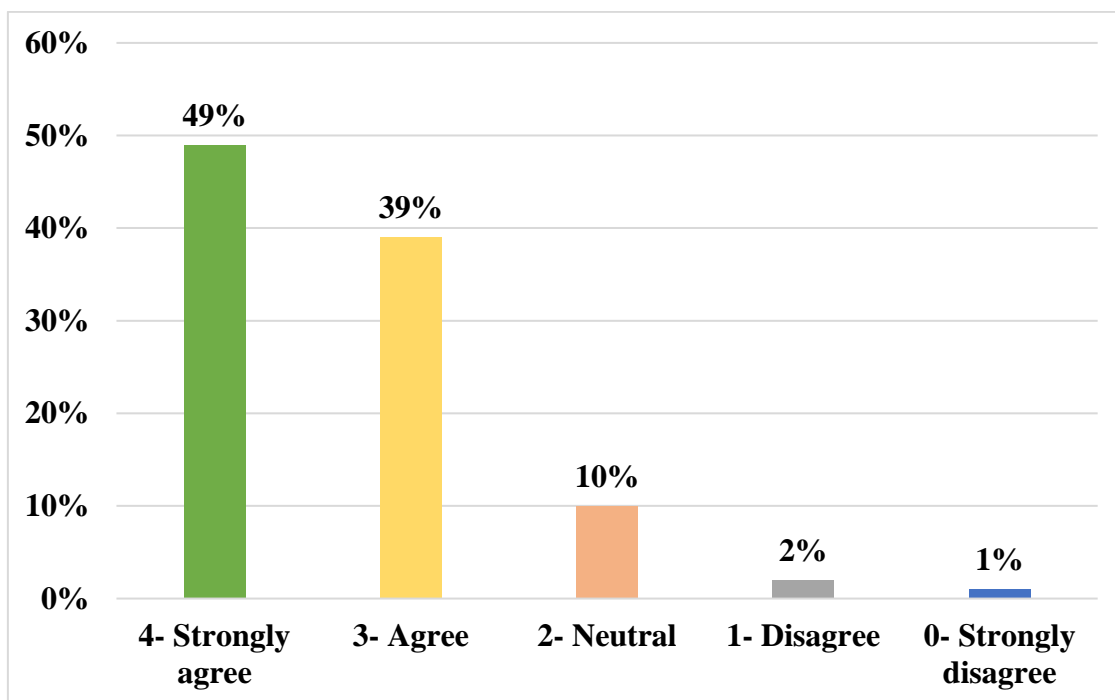


Point 14: Teachers are able to identify your weaknesses and help you to overcome them.

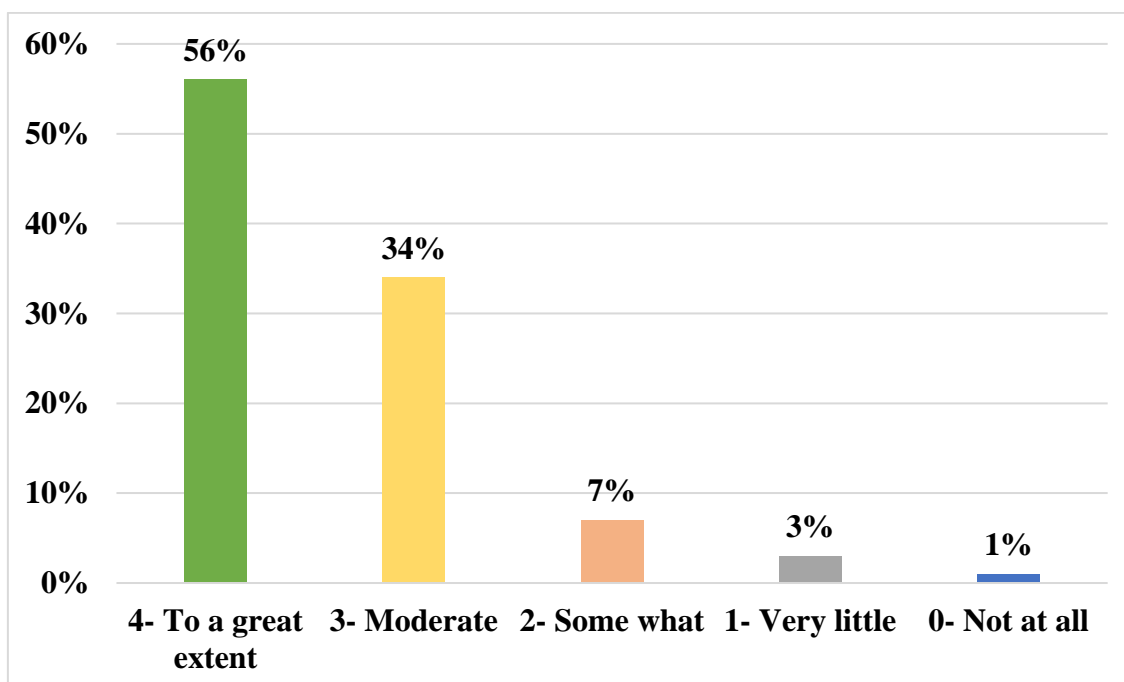




Point 15: The institution makes effort to engage students in the monitoring, review and continuous quality improvement of the teaching learning process.

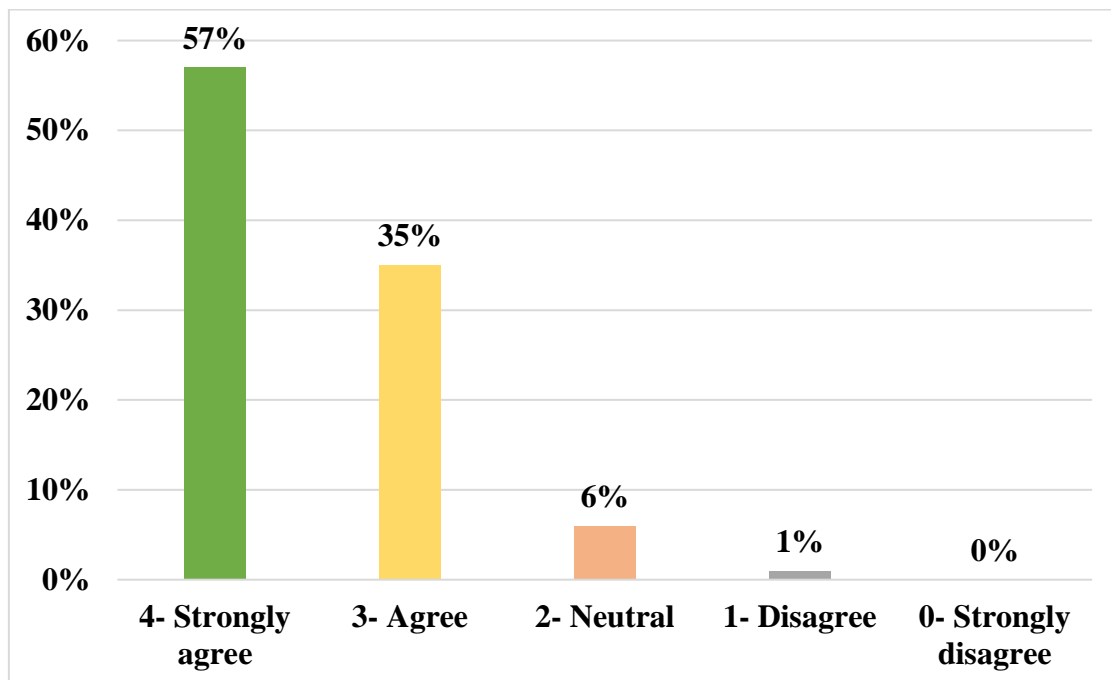


Point 16: The institute/ teachers use student centric methods, such as experiential learning, participative learning and problem solving methodologies for enhancing learning experiences.

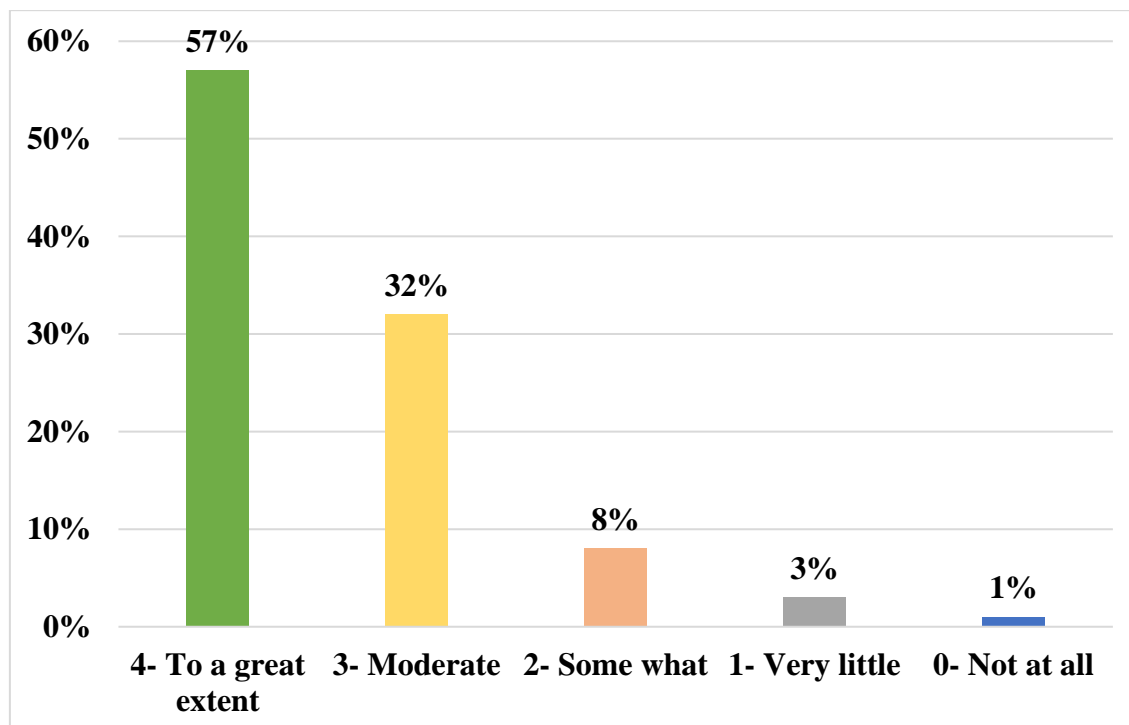




Point 17: Teachers encourage you to participate in extracurricular activities.

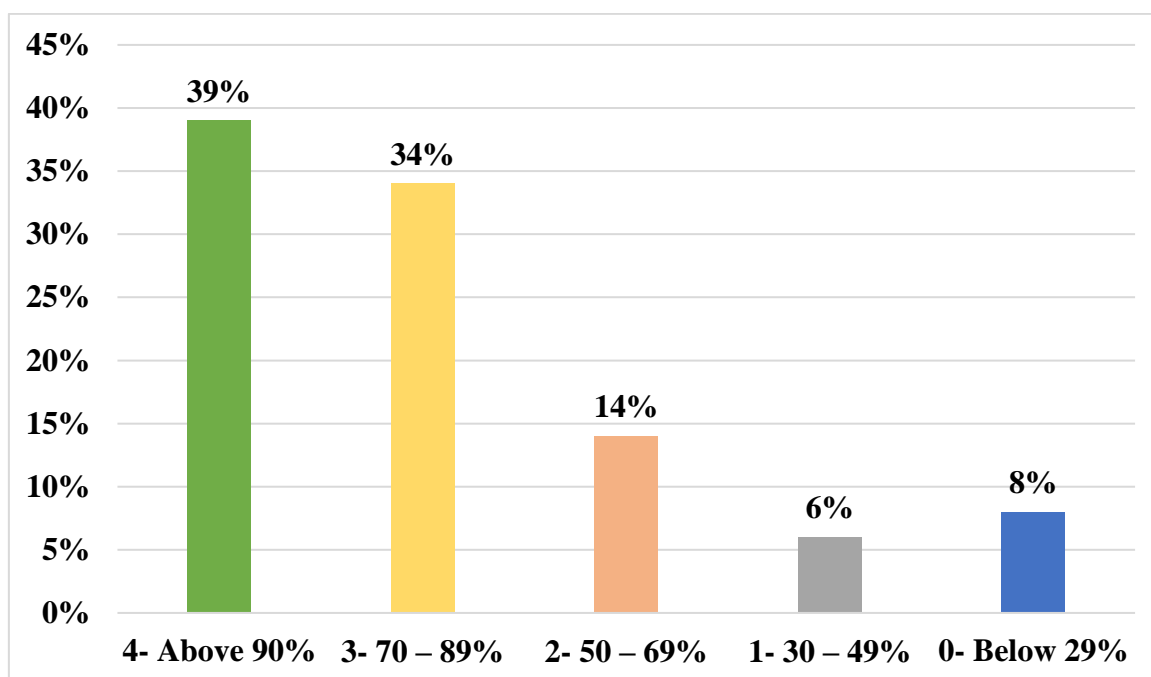


Point 18: Efforts are made by the institute/ teachers to inculcate soft skills, life skills and employability skills to make you ready for the world of work.





Point 19: What percentage of teachers use ICT tools such as LCD projector, Multimedia, etc. while teaching.



Point 20: The overall quality of teaching-learning process in your institute is very good.

